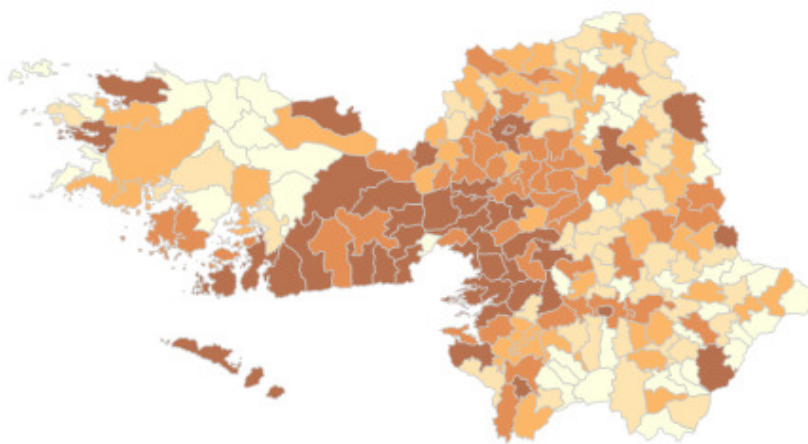


census 2011 RESULTS



Census 2011 – Results for County Galway

Stats for Galway Age Friendly Programme



Social Inclusion Unit
Galway County Council



Summary

Population

- County Galway has a larger proportion of people in the 50 – 64 category (17.1%) than in the City (13.3%)
- County Galway has a larger proportion of people over the age of 65 (12.7%) than in the City (9.4%)
- EDs in the west, north east and south east of the County contain higher percentages of people over the age of 65.
- The ED Loughatorick (near Woodford) has the 4th joint highest age average in the State at 51.4 years of age
- Between 2006 – 2011 in County Galway the 60 – 64 age category saw the biggest increase in people

Dependency & Living Arrangements

- County Galway has a higher old age dependency rate than the State and a much higher old age dependency rate than the City.
- The older the person the more likely they are to live alone
- Older females are more likely to live alone than older males
- As the population gets older people are less likely to be in Private Households and more likely to be in a nursing home or hospital

Health

- 62.6% of those over the age of 65 in County Galway consider their health very good or good
- 35.8% of those over the age of 65 in County Galway consider their health fair, bad or very bad
- The older the age group the less people that state they are in very good health
- The older the age group the more people that state their health is fair, bad or very bad.
- At 47.9% the 65 – 69 age group was the most popular that said their health was good
- The over 85s was the most popular age group that said their health was either fair, bad or very bad.
- 32.2% of those over the age of 65 with a disability live alone.
- The older the person with the disability gets, the more likely they are to live on their own
- In County Galway the 50 – 54 age category contains the highest percentage of carers at 10.2%
- People in the age categories 50 – 74 are more likely to care for someone than in the other age categories.

Computer & Internet

- As people get older they are less likely to own a computer or have access to broadband or internet.
- Only 41.9% of people over 65 own a computer in the State
- Only 35.5% of people over 65 have access to broadband in the State

Population

Table 1 Number and Proportion of Population by Age Categories 2011 for Galway County, Galway City and the State

Age Category	County Galway		Galway City		State	
	No	%	No	%	No	%
Total 0-4	14,091	8.0%	4,869	6.4%	356,329	7.8%
Total 5-9	13,310	7.6%	4,046	5.4%	320,770	7.0%
Total 10-14	12,292	7.0%	3,578	4.7%	302,491	6.6%
Total 15-19	10,970	6.3%	4,953	6.6%	283,019	6.2%
Total 20-24	8,971	5.1%	8,373	11.1%	297,231	6.5%
Total 25-29	10,497	6.0%	9,302	12.3%	361,122	7.9%
Total 30-34	13,235	7.6%	8,598	11.4%	393,945	8.6%
Total 35-39	14,131	8.1%	6,051	8.0%	364,261	7.9%
Total 40-44	13,451	7.7%	4,540	6.0%	330,812	7.2%
Total 45-49	12,160	6.9%	4,072	5.4%	305,185	6.7%
Total 50-54	11,198	6.4%	3,726	4.9%	274,386	6.0%
Total 55-59	10,038	5.7%	3,415	4.5%	244,522	5.3%
Total 60-64	8,790	5.0%	2,947	3.9%	218,786	4.8%
Total 65-69	6,967	4.0%	2,407	3.2%	173,638	3.8%
Total 70-74	5,202	3.0%	1,718	2.3%	131,190	2.9%
Total 75-79	4,167	2.4%	1,298	1.7%	102,036	2.2%
Total 80-84	2,932	1.7%	918	1.2%	70,113	1.5%
Total 85+	2,722	1.6%	718	1.0%	58,416	1.3%

- In County Galway in 2011 the largest proportion of people were in the 35 – 39 age category (8.1%)
- In Galway City in 2011 the largest proportion of people were in the 25 – 29 age category (12.3%)
- In the State in 2011 the largest proportion of people were in the 30 – 34 age category (8.1%)

Figure 1 Proportion of Population by Age Categories 2011, Galway County, Galway City & the State

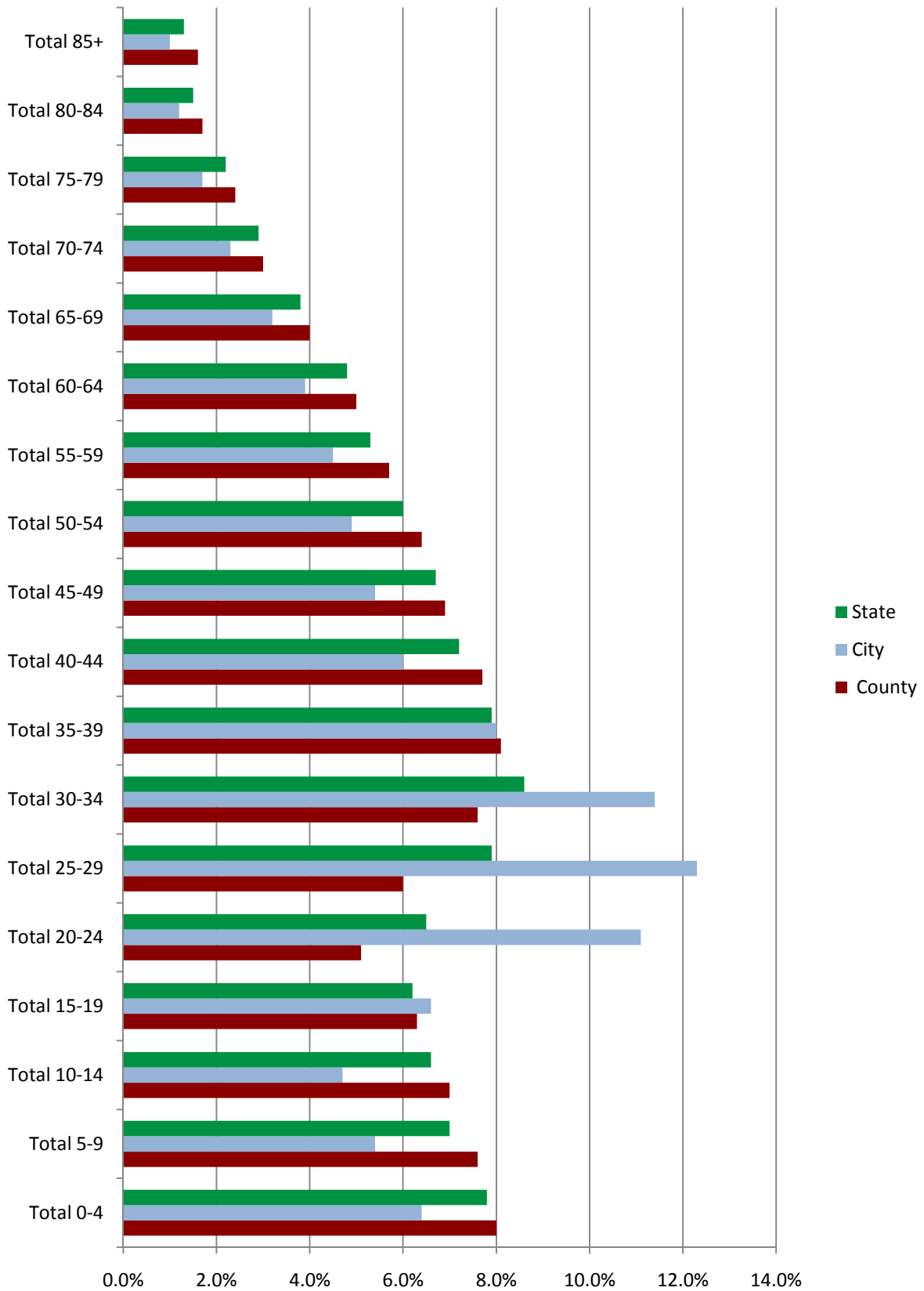


Table 2 Number and Proportion of Population by Age Categories 2011 for Galway County, Galway City and the State

Age Category	County Galway		Galway City		State	
	No	%	No	%	No	%
Total 0 - 19	50,663	28.9%	17,446	23.1%	1,262,609	27.6%
Total 20 - 34	32,703	18.7%	26,273	34.8%	1,052,298	23.0%
Total 35 - 49	39,742	22.7%	14,663	19.4%	1,000,258	21.8%
Total 50 - 64	30,026	17.1%	10,088	13.3%	737,694	16.1%
Total 65 +	21,990	12.7%	7,059	9.4%	535,393	11.7%

- County Galway has a larger proportion of people in the age category 0 – 19 (28.9%) than the City (23.1%).
- The City has a much larger proportion of people in the 20 – 34 age category (34.8%) than in the County (18.7%)
- County Galway has a slightly larger proportion of people in the 35 – 49 category (22.7%) than in the City (19.4%)
- County Galway has a larger proportion of people in the 50 – 64 category (17.1%) than in the City (13.3%)
- County Galway has a larger proportion of people in the 65 + category (12.7%) than in the City (9.4%)

Figure 2 Proportion of Population by Age Categories 2011, Galway County, Galway City & the State

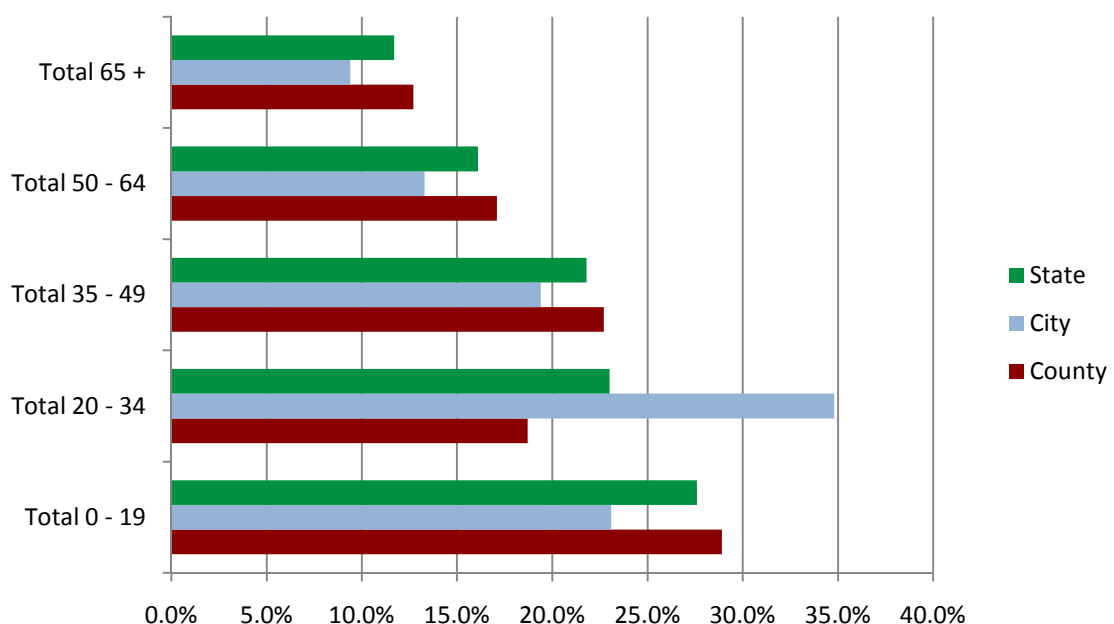
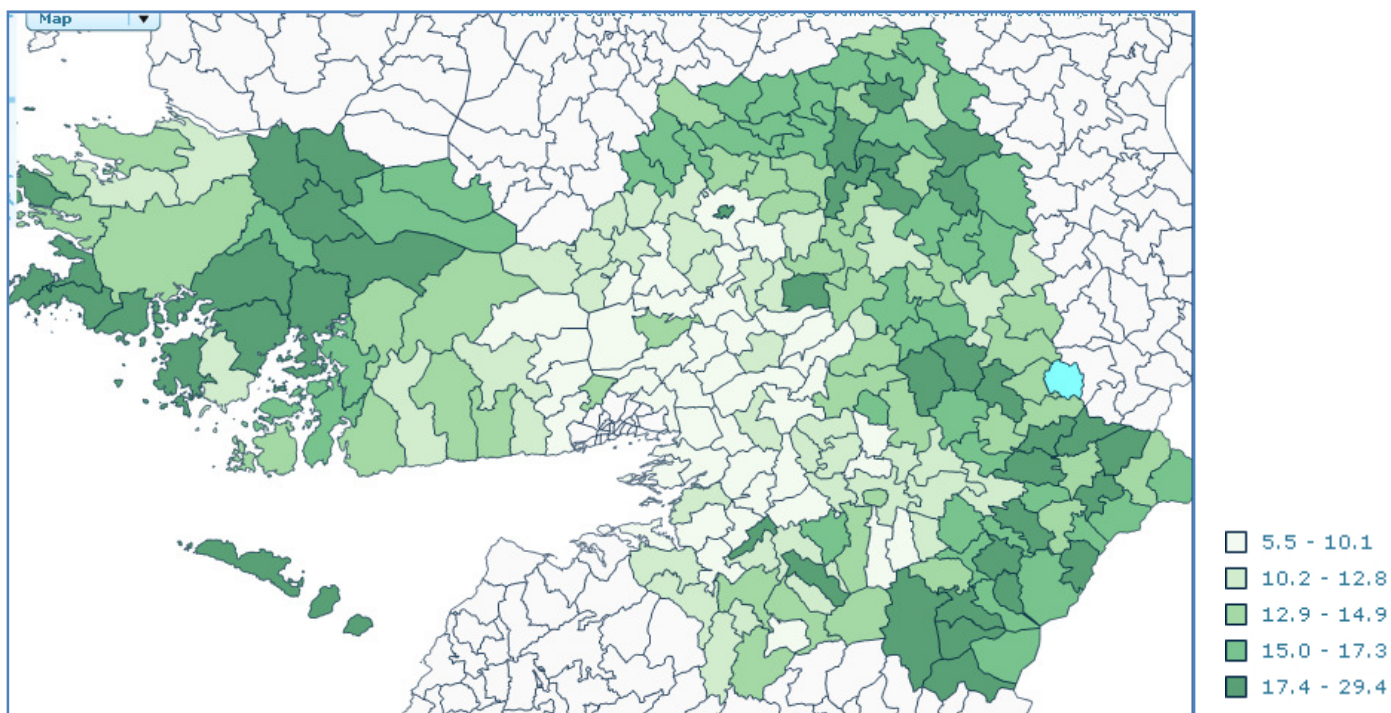


Figure 3 % Population, County Galway EDs over 65 Years of Age



- EDs in the west, north east and south east of the County contain higher percentages of people over the age of 65.
- The ED Loughatorick (near Woodford) has the 4th joint highest age average in the State at 51.4 years of age

Table 3 Population by Age Categories County Galway 2011 & % Change in Population

Age Category	2006		2011		Change Population 2006 - 2011
	No	%	No	%	
Total 0-4	11,959	7.5%	14,091	8.0%	0.5%
Total 5-9	11,593	7.3%	13,310	7.6%	0.3%
Total 10-14	11,344	7.1%	12,292	7.0%	-0.1%
Total 15-19	11,101	7.0%	10,970	6.3%	-0.7%
Total 20-24	9,760	6.1%	8,971	5.1%	-1%
Total 25-29	10,955	6.9%	10,497	6.0%	-0.9%
Total 30-34	12,141	7.6%	13,235	7.6%	-
Total 35-39	12,610	7.9%	14,131	8.1%	0.2%
Total 40-44	11,723	7.4%	13,451	7.7%	0.3%
Total 45-49	10,969	6.9%	12,160	6.9%	-
Total 50-54	9,837	6.2%	11,198	6.4%	0.2%
Total 55-59	8,869	5.6%	10,038	5.7%	0.1%
Total 60-64	7,027	4.4%	8,790	5.0%	0.6%
Total 65-69	5,661	3.6%	6,967	4.0%	0.4%
Total 70-74	4,811	3.0%	5,202	3.0%	-
Total 75-79	3,776	2.4%	4,167	2.4%	-
Total 80-84	2,794	1.8%	2,932	1.7%	-0.1%
Total 85+	2,326	1.5%	2,722	1.6%	0.1%

- Between 2006 – 2011 in County Galway the 60 – 64 age category saw the biggest increase in people followed by the 0 – 4 age category
- The 25 – 29 age category saw the biggest decrease in people followed by the 15 – 19 age category.

Figure 4 % Change in Population 2006 - 2011 in County Galway by Age Category

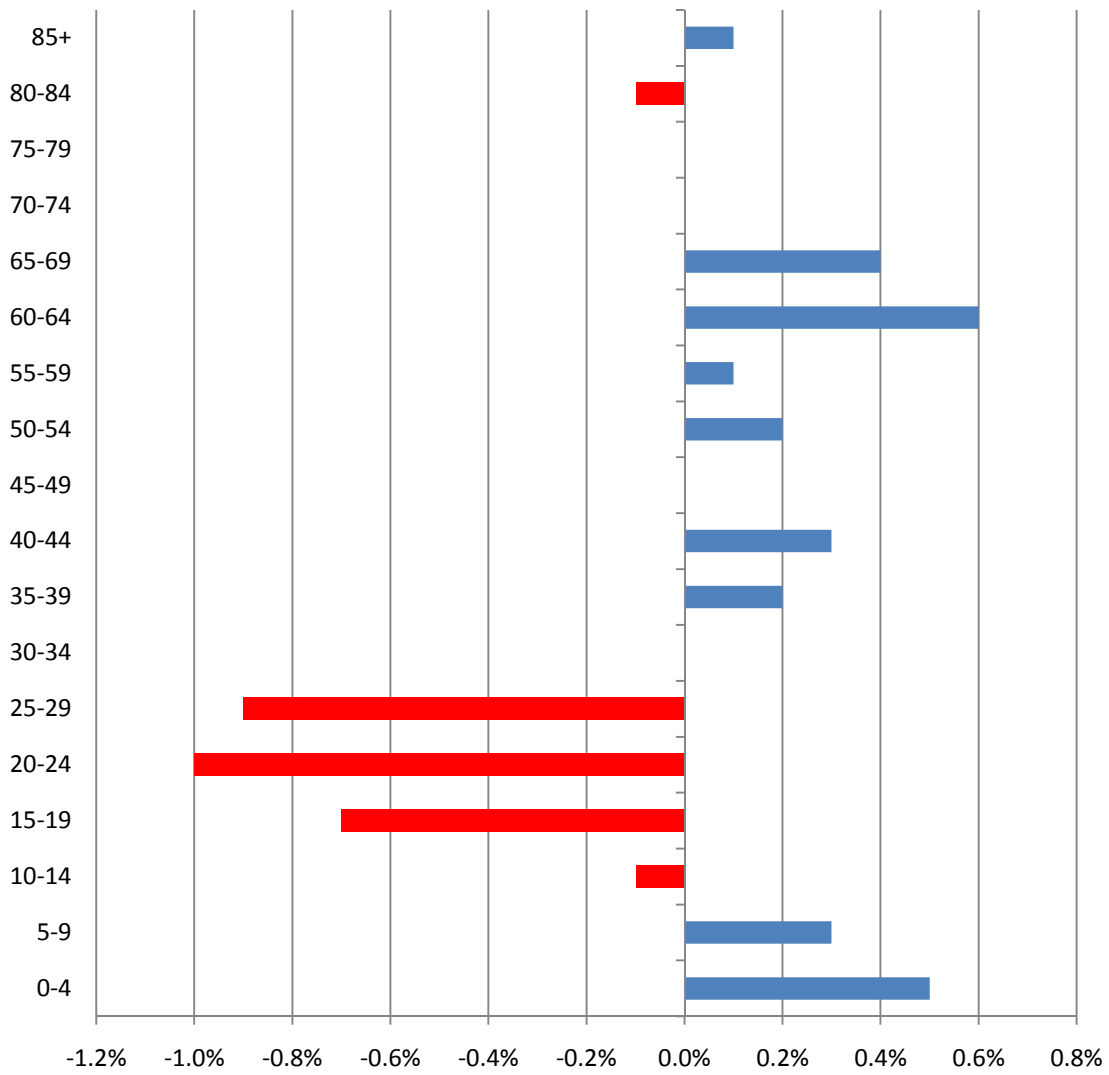


Table 4 Age Dependency* Rates 2006 & 2011, Galway County, Galway City and the State

Area	2006			2011		
	Young Age Dependence 0 - 14	Older Age Dependency 65 +	Total Age Dependency	Young Age Dependence 0 - 14	Older Age Dependency 65 +	Total Age Dependency
County Galway	33.2%	35%	51.7%	35%	19.4%	54.4%
Galway City	20.2%	11.1%	31.4%	22.3%	12.6%	34.9%
State	29.7%	16.1%	45.8%	31.9%	17.4%	49.3%

- County Galway’s total age dependency has grown from 51.7% in 2006 to 54.4% in 2011. This is mostly likely because there were increases in population of children and older people and decreases in population in the middle age categories.
- Galway City (34.9%) has a much lower total age dependency rate that Galway County (54.4%). This is because proportionally there are a lot more people in the 20 – 34 age category living in the City.
- County Galway has a higher older age dependency rate than the State and a much higher older age dependency rate than the City.

* The age dependency rates provide crude but useful indicators of the age structure of the population. The young and old dependency rates are calculated by expressing the young population (0-14 years) and the old population (aged 65 years and over) as percentages of the population of working age (15-64 years). The total age dependency rate is the sum of the young and old rates.

Figure 5 Old Age Dependency Rate by ED County Galway 2011

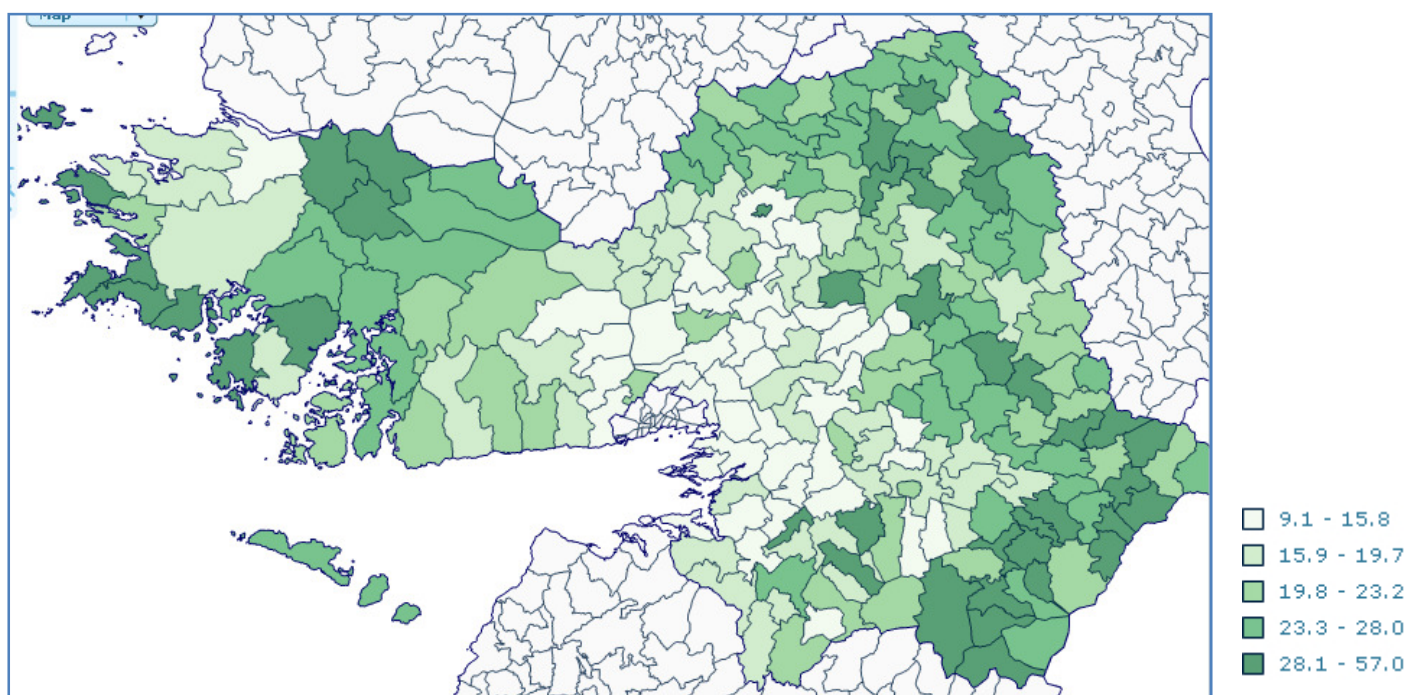


Table 5 Population Aged 65 Years and Over Living Alone by Sex in County Galway 2011

Age Group	% Both Sexes Living Alone	% Males living alone	% Females Living Alone
65 - 69	27.3%	23.7%	30.7%
70 - 74	31.1%	25.7%	35.9%
75 - 79	34.7%	27.4%	40.5%
80 - 84	37.6%	28.2%	43.9%
85 +	37.5%	30.1%	41.7%

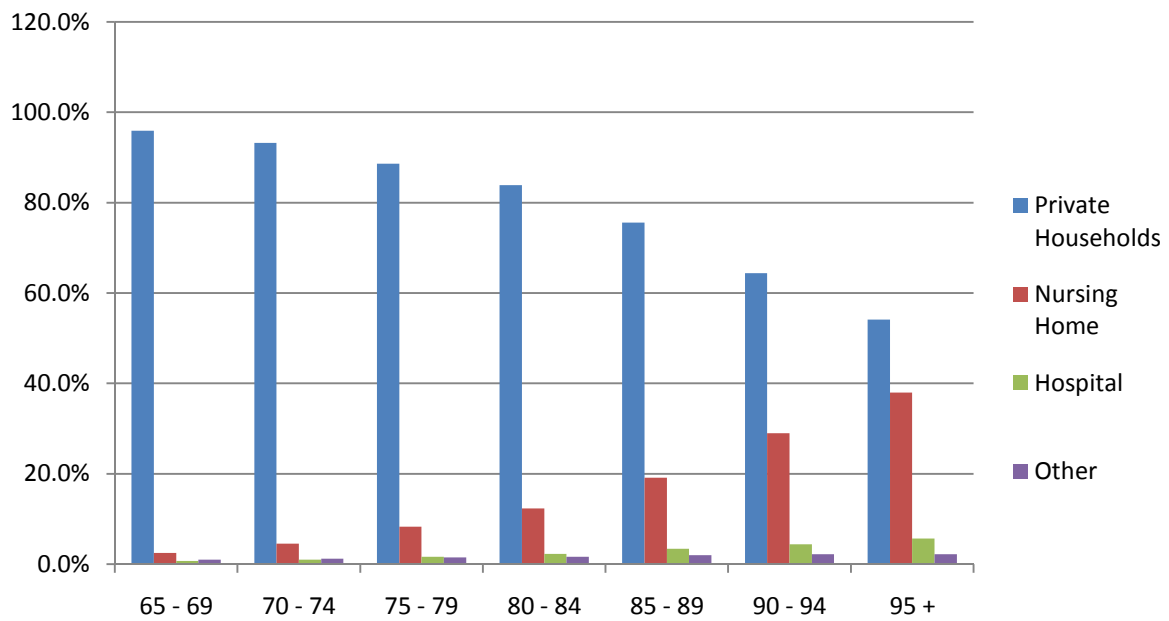
- The older the person the more likely they are to live alone
- Older females are more likely to live alone than older males

Table 6 Proportion of Population in the State aged 65 years and over Enumerated at their Usual Place of Residence

Age	Private households	Nursing Home	Hospital	Other
65 - 69	95.9%	2.5%	0.7%	1.0%
70 - 74	93.2%	4.5%	1.0%	1.2%
75 - 79	88.6%	8.3%	1.6%	1.5%
80 - 84	83.9%	12.3%	2.3%	1.6%
85 - 89	75.6%	19.1%	3.4%	2.0%
90 - 94	64.4%	29.0%	4.4%	2.2%
95 +	54.1%	38.0%	5.7%	2.2%

- As the population gets older people are less likely to be in Private Households and more likely to be in a nursing home or hospital

Figure 6 Proportion of Population in the State aged 65 years and over Enumerated at their Usual Place of Residence

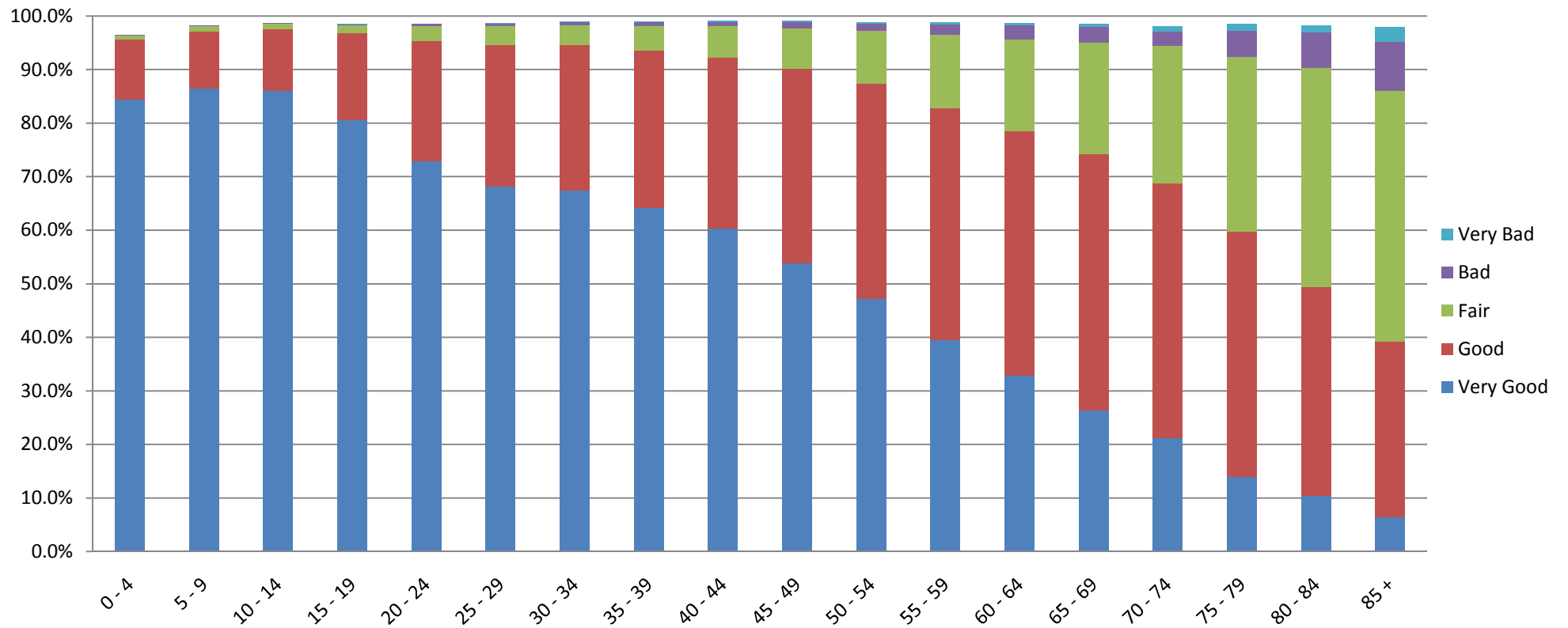


Health

Table 7 General Health* of County Galway 2011

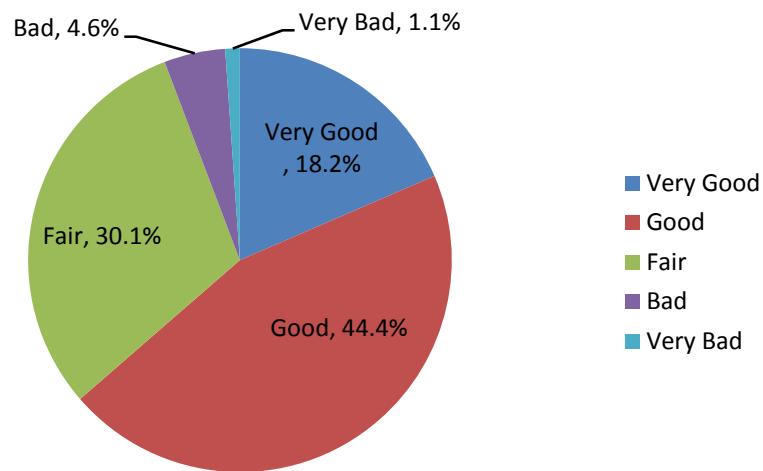
	All	Very Good		Good		Fair		Bad		Very Bad	
0 - 4 years	14,091	11,886	84.4%	1,579	11.2%	100	0.7%	11	0.1%	4	0.0%
5 - 9 years	13,310	11,514	86.5%	1,418	10.7%	120	0.9%	11	0.1%	3	0.0%
10 - 14 years	12,292	10,582	86.1%	1,404	11.4%	129	1.0%	7	0.1%	3	0.0%
15 - 19 years	10,970	8,846	80.6%	1,768	16.1%	180	1.6%	11	0.1%	7	0.1%
20 - 24 years	8,971	6,540	72.9%	2,009	22.4%	247	2.8%	31	0.3%	4	0.0%
25 - 29 years	10,497	7,160	68.2%	2,775	26.4%	382	3.6%	35	0.3%	7	0.1%
30 - 34 years	13,235	8,923	67.4%	3,594	27.2%	491	3.7%	67	0.5%	13	0.1%
35 - 39 years	14,131	9,075	64.2%	4,155	29.4%	642	4.5%	94	0.7%	15	0.1%
40 - 44 years	13,451	8,122	60.4%	4,294	31.9%	782	5.8%	102	0.8%	21	0.2%
45 - 49 years	12,160	6,542	53.8%	4,413	36.3%	929	7.6%	140	1.2%	23	0.2%
50 - 54 years	11,198	5,286	47.2%	4,487	40.1%	1,111	9.9%	158	1.4%	38	0.3%
55 - 59 years	10,038	3,954	39.4%	4,360	43.4%	1,371	13.7%	195	1.9%	41	0.4%
60 - 64 years	8,790	2,885	32.8%	4,018	45.7%	1,507	17.1%	238	2.7%	33	0.4%
65 - 69 years	6,967	1,831	26.3%	3,335	47.9%	1,452	20.8%	212	3.0%	35	0.5%
70 - 74 years	5,202	1,099	21.1%	2,482	47.7%	1,330	25.6%	146	2.8%	48	0.9%
75 - 79 years	4,167	584	14.0%	1,904	45.7%	1,357	32.6%	210	5.0%	48	1.2%
80 - 84 years	2,932	307	10.5%	1,144	39.0%	1,196	40.8%	193	6.6%	39	1.3%
85 years and over	2,722	175	6.4%	893	32.8%	1,274	46.8%	250	9.2%	75	2.8%
Total	175,124	105,311	60.1%	50,032	28.6%	14,600	8.3%	2,111	1.2%	457	0.3%

Figure 7 General Health of Population County Galway 2011



- The older the age group the less people that state they are in very good health
- The older the age group the more people that state their health is fair, bad or very bad.
- At 86.5% the 5 - 9 age group is the most healthiest stating they were very healthy
- At 47.9% the 65 – 69 age group was the most popular that said their health was good
- The over 85s was the most popular age group that said their health was either fair, bad or very bad.

Figure 8 General Health of Population of County Galway over the Age 65, 2011



- 62.6% of those over the age of 65 in County Galway consider their health very good or good
- 35.8% of those over the age of 65 in County Galway consider their health fair, bad or very bad

*A new question on general health was introduced for the first time in census 2011 and asked respondents to select one of five categories ranging from very good to very bad. Self-perceived health provides a well validated and widely used measure of actual health, despite its subjective nature.

Table 8 Percentage of Disabled Persons Living Alone in County Galway by Age Group & Disability Type, 2011

	All Ages	0 - 14 years	15 - 19 years	20 - 24 years	25 - 29 years	30 - 34 years	35 - 49 years	50 - 64 years	65 years and over
Total persons	8.2	0	0.4	2.1	5.7	7.6	7.8	12.8	27.3
Total persons with a disability	19.5	0	1.2	6.4	9.8	12.2	13.3	20.9	32.2
Blindness or a serious vision impairment	24.2	0	0	9.5	13.2	10	11	30	33.7
Deafness or a serious hearing impairment	23.4	0	5	6.7	12.2	17.9	12.2	19	29.5
A condition that substantially limits one or more basic physical activities	25.5	0	2.2	8.2	15.8	11.2	15.2	21.6	33.1
An intellectual disability	9.8	0	0.6	1.5	4.5	9.3	9.5	26.3	24.1
Difficulty in learning, remembering or concentrating	14.2	0	0.8	5.3	9.6	10.2	16.3	24.7	28.5
Psychological or emotional condition	20.1	0	3.5	3.4	12	19.1	20.1	29.6	30.1
Other disability, including chronic illness	20	0	1	8.4	13.4	10.4	13.2	19.8	30.2
Difficulty in dressing, bathing or getting around inside the home	20.4	0	0	3.8	11	5.8	10.2	18.4	28.7
Difficulty in going outside home alone	23.1	0	0	4.6	7.6	9.6	12.6	20.7	31.8
Difficulty in working or attending school/college	18.5	0	0.9	2.7	12.6	8.4	13.8	21.7	29.1
Difficulty in participating in other activities	20.3	0	0.6	6.5	11.8	10.5	13	19.7	30.5

- People with disabilities are more likely to live on their own than the general population
- The older the person with the disability gets, the more likely they are to live on their own
- 32.2% of those over the age of 65 with a disability live alone.

Figure 9 Percentage of Disabled Persons Living Alone in County Galway by Age Group & Disability Type, 2011

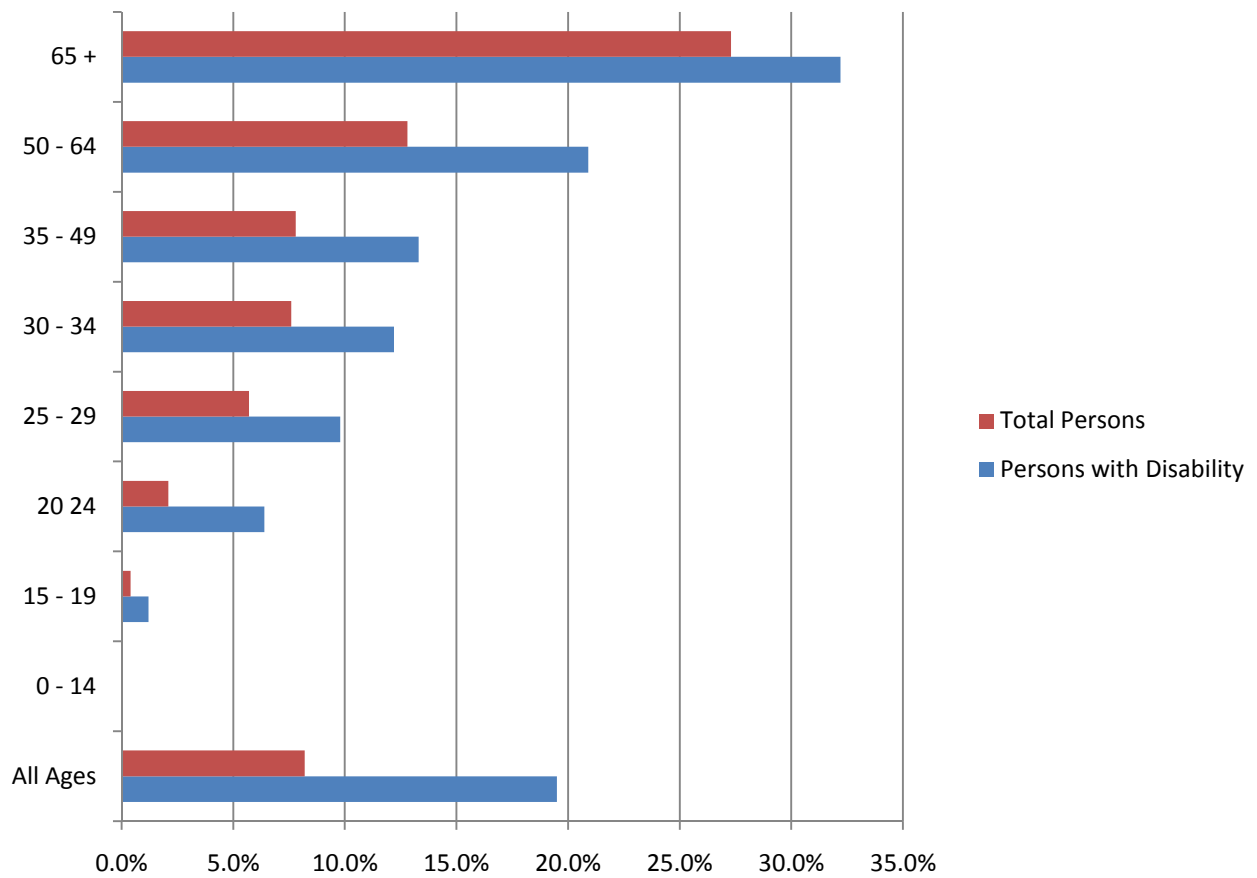
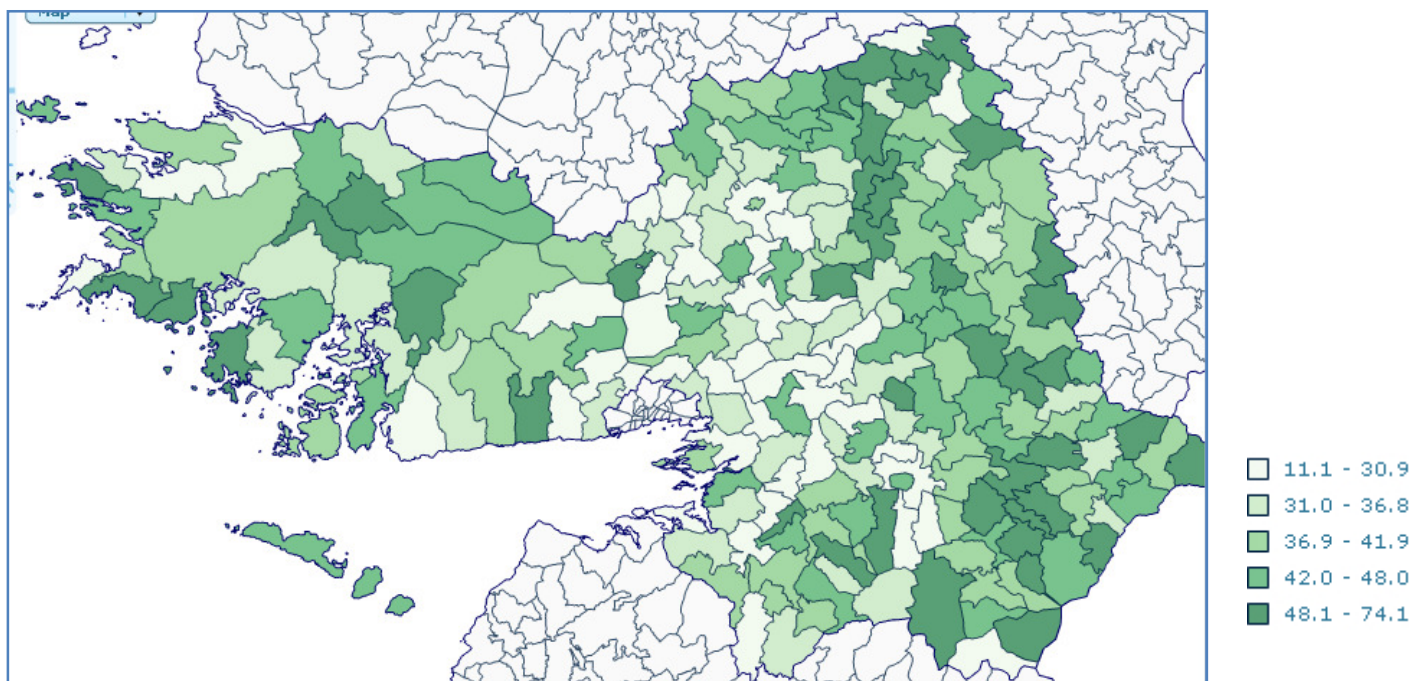


Figure 10 % of Population over 65 with a disability By ED County Galway 2011



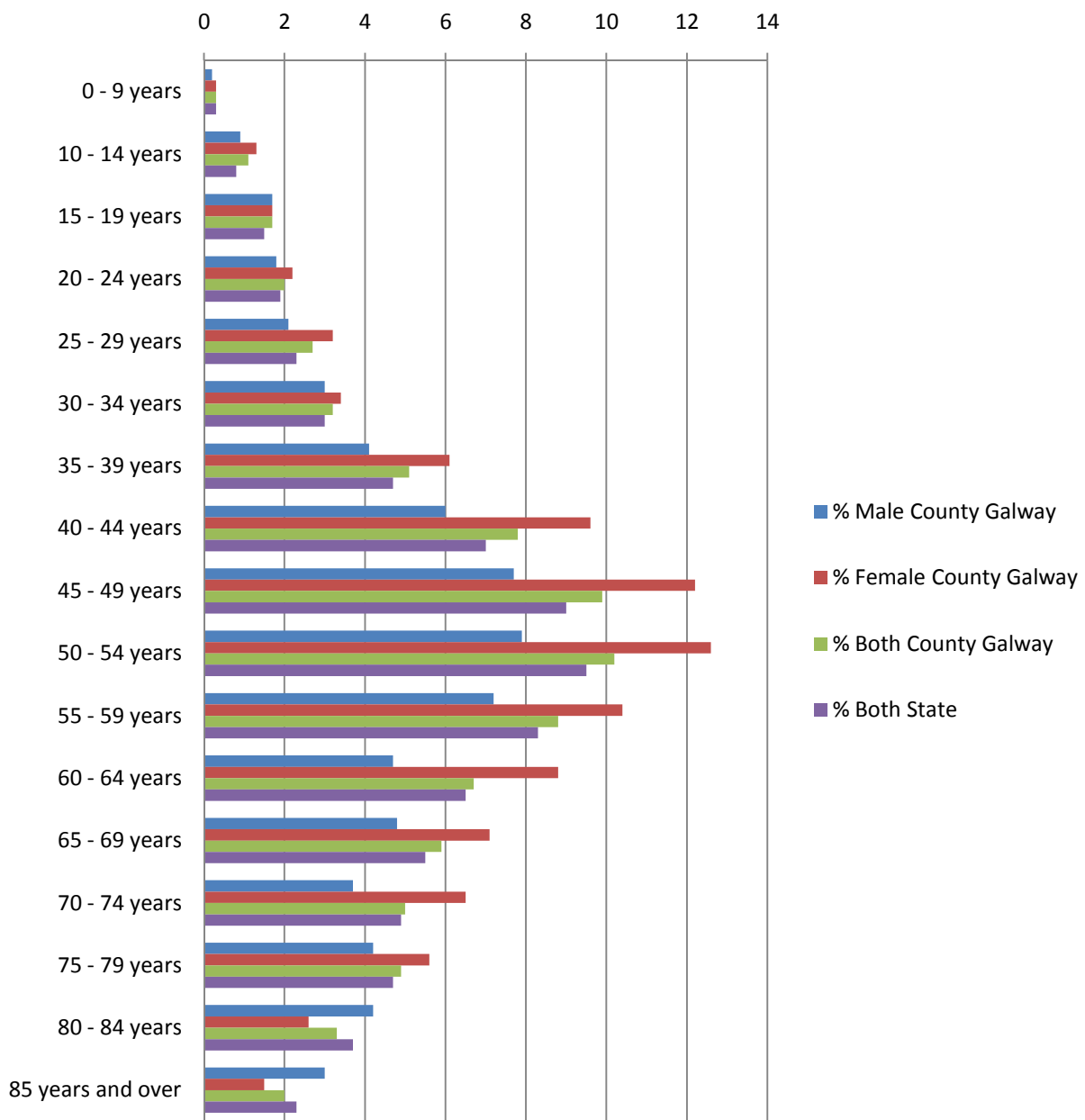
Carers

Table 9 Carers as a % of the Total Population in County Galway & the State 2011

	County Galway			State
	% Male	% Female	% Both Sexes	% Both
All Ages	3.7	5.4	4.5	4.1
0 - 9 years	0.2	0.3	0.3	0.3
10 - 14 years	0.9	1.3	1.1	0.8
15 - 19 years	1.7	1.7	1.7	1.5
20 - 24 years	1.8	2.2	2	1.9
25 - 29 years	2.1	3.2	2.7	2.3
30 - 34 years	3	3.4	3.2	3
35 - 39 years	4.1	6.1	5.1	4.7
40 - 44 years	6	9.6	7.8	7
45 - 49 years	7.7	12.2	9.9	9
50 - 54 years	7.9	12.6	10.2	9.5
55 - 59 years	7.2	10.4	8.8	8.3
60 - 64 years	4.7	8.8	6.7	6.5
65 - 69 years	4.8	7.1	5.9	5.5
70 - 74 years	3.7	6.5	5	4.9
75 - 79 years	4.2	5.6	4.9	4.7
80 - 84 years	4.2	2.6	3.3	3.7
85 years and over	3	1.5	2	2.3

- There are 7,898 carers in County Galway. This is 4.5% of the population of County Galway compared to the State at 4.1%.
- Females in County Galway are more likely to be carers than males.
- There is a higher percentage of carers in County Galway than the State for most age categories.
- In County Galway the 50 – 54 age category contains the highest percentage of carers at 10.2%
- People in the age categories 50 – 74 are more likely to care for some one than in the other age categories.

Figure 11 Carers as a % of the Total Population in County Galway & the State 2011



Computer & Internet

Table 10 Computer Ownership & Internet Access in the State for people over the age of 50

	50 - 54 years		55 - 59 years		60 - 64 years		65 years and over	
All households	153,723		139,431		126,758		336,503	
Yes, owns a personal computer	125,043	81.3%	105,278	75.5%	85,492	67.4%	140,838	41.9%
No, does not own a personal computer	26,011	16.9%	31,542	22.6%	38,582	30.4%	187,048	55.6%
PC ownership not stated	2,669	1.7%	2,611	1.9%	2,684	2.1%	8,617	2.6%
Yes, broadband internet access	110,983	72.2%	93,296	66.9%	74,860	59.1%	119,548	35.5%
Yes, other than broadband	11,852	7.7%	10,057	7.2%	8,512	6.7%	15,524	4.6%
No internet access	28,098	18.3%	33,387	23.9%	40,603	32.0%	191,628	56.9%
Internet access not stated	2,790	1.8%	2,691	1.9%	2,783	2.2%	9,803	2.9%

- As people get older they are less likely to own a computer or have access to broadband or internet.
- Only 41.9% of people over 65 own a computer
- Only 35.5% of people over 65 have access to broadband